

FRAX 99

Sweep Frequency Response Analyzer



- Smallest and most rugged FRA instrument in the industry
- Highest possible repeatability by using reliable cable practice and high-performance instrumentation
- Fulfills all international standards for SFRA measurements
- Advanced analysis and decision support built into the software
- Imports data from other FRA test sets

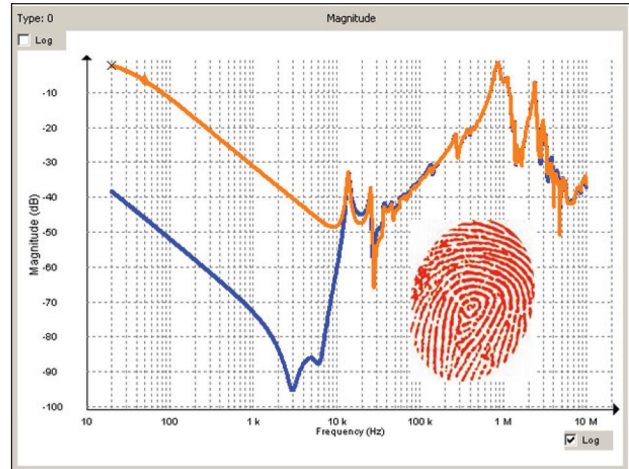
DESCRIPTION

Power transformers are some of the most vital components in today's transmission and distribution infrastructure. Transformer failures cost enormous amounts of money in unexpected outages and unscheduled maintenance. It is important to avoid these failures and make testing and diagnostics reliable and efficient.

The FRAX 99 Sweep Frequency Response Analyzer (SFRA) detects potential mechanical and electrical problems that other methods are unable to detect. Major utilities and service companies have used the FRA method for more than a decade. The measurement is easy to perform and will capture a unique "fingerprint" of the transformer. The measurement is compared to a reference "fingerprint" and gives a direct answer if the mechanical parts of the transformer are unchanged or not. Deviations indicate geometrical and/or electrical changes within the transformer.

FRAX 99 detects problems such as:

- Winding deformations and displacements
- Shorted turns and open windings
- Loosened clamping structures
- Broken clamping structures
- Core connection problems
- Partial winding collapse
- Faulty core grounds
- Core movements
- Hoop buckling



Collecting fingerprint data using Frequency Response Analysis (FRA) is an easy way to detect electro-mechanical problems in power transformers and an investment that will save time and money.

APPLICATION

Power transformers are specified to withstand mechanical forces from both transportation and in-service events, such as faults and lightning. However, mechanical forces may exceed specified limits during severe incidents or when the insulation's mechanical strength has weakened due to aging. A relatively quick test where the fingerprint response is compared to a post event response allows for a reliable decision on whether the transformer safely can be put back into service or if further diagnostics is required.

Method Basics

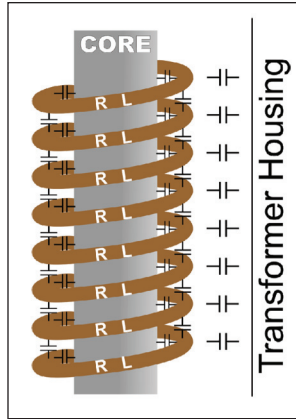
A transformer consists of multiple capacitances, inductances and resistors, a very complex circuit that generates a unique fingerprint or signature when test signals are injected at discrete frequencies and responses are plotted as a curve.

Capacitance is affected by the distance between conductors. Movements in the winding will consequently affect capacitances and change the shape of the curve.

The SFRA method is based on comparisons between measured curves where variations are detected. One SFRA test consists of multiple sweeps and reveals if the transformer's mechanical or electrical integrity has been jeopardized.

Practical Application

In its standard application, a "finger print" reference curve for each winding is captured when the transformer is new or when it is in a known good condition. These curves can later be used as reference during maintenance tests or when there is reason to suspect a problem.



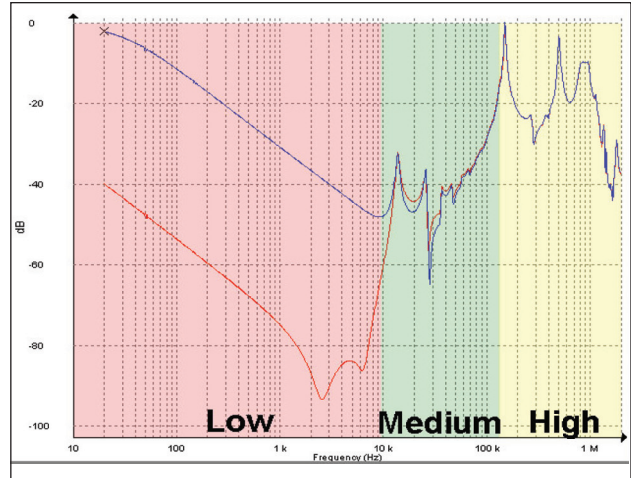
The most reliable method is the time based comparison where curves are compared over time on measurements from the same transformer. Another method utilizes type based comparisons between "sister transformers" with the same design. Lastly, a construction based comparison can, under certain conditions, be used when comparing measurements between windings in the same transformer.

These comparative tests can be performed 1) before and after transportation, 2) after severe through faults 3) before and after overhaul and 4) as diagnostic test if you suspect potential problems. One SFRA test can detect winding problems that requires multiple tests with different kinds of test equipment or problems that cannot be detected with other techniques at all. The SFRA test presents a quick and cost effective way to assess if damages have occurred or if the transformer can safely be energized again. If there is a problem, the test result provides valuable information that can be used as decision support when determining further action.

Having a reference measurement on a mission critical transformer when an incident has occurred is, therefore, a valuable investment as it will allow for an easier and more reliable analysis.

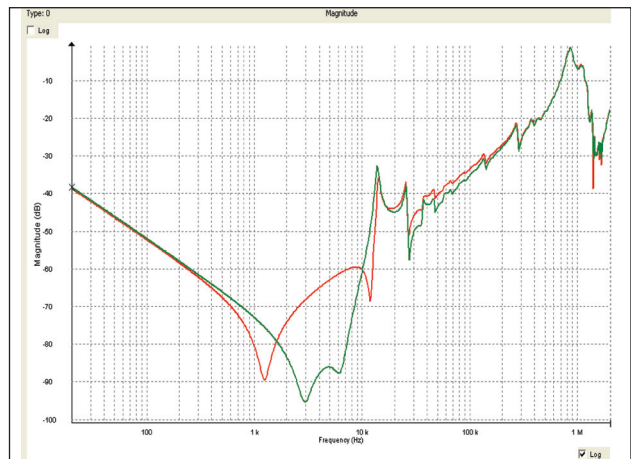
Analysis and Software

As a general guideline, shorted turns, magnetization and other problems related to the core alter the shape of the curve in the lowest frequencies. Medium frequencies represent axial or radial movements in the windings and high frequencies indicate problems involving the cables from the windings, to bushings and tap changers.



An example of low, medium and high frequencies

The FRAX Software provides numerous features to allow for efficient data analysis. Unlimited tests can be open at the same time and the user has full control on which sweeps to compare. The response can be viewed in traditional Magnitude vs. Frequency and/or Phase vs. Frequency view. The user can also choose to present the data in an Impedance or Admittance vs. Frequency view for powerful analysis on certain transformer types.

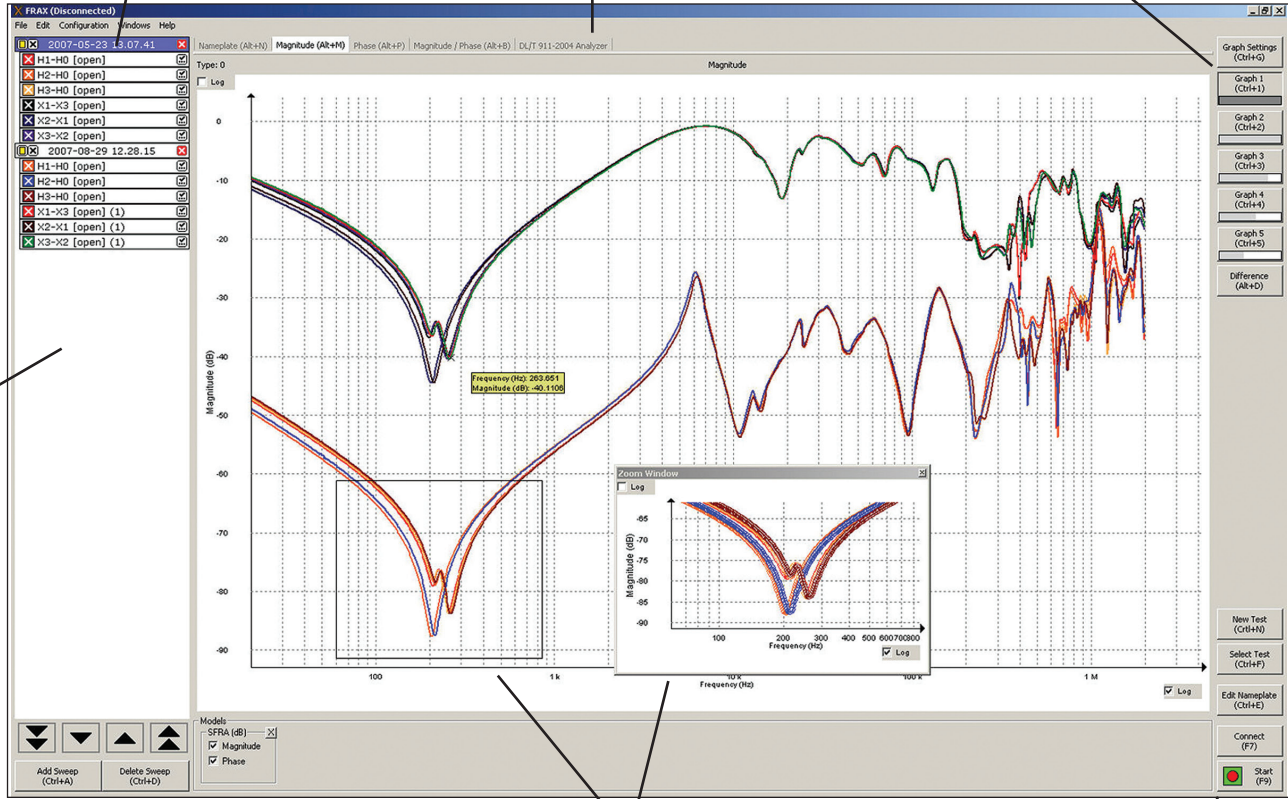


The figure above shows a single phase transformer after a service overhaul where, by mistake, the core ground never got connected (red), and after the core ground was properly connected (green). This potential problem clearly showed up at frequencies between 1 kHz and 10 kHz and a noticeable change is also visible in the 10 kHz - 200 kHz range.

Test Object Browser — Unlimited number of tests and sweeps. Full user control.

Quick Select Tabs — Quickly change presentation view for different perspectives and analysis tools.

Quick Graph Buttons — Programmable graph setting lets you change views quickly and easily.



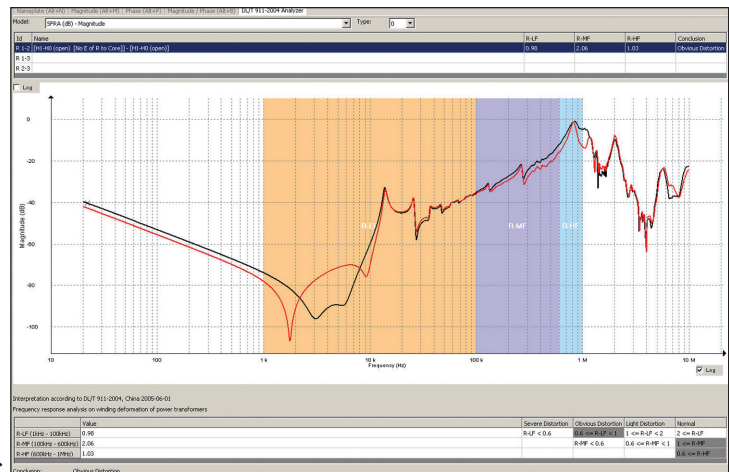
Sweep/Curve Settings — Every sweep can be individually turned on or off, change color, thickness and position.

Dynamic Zoom — Zoom in and move your focus to any part of the curve.

Operation Buttons — All essential functions at your fingertips; select with mouse, function keys or touch screen.

Built-in-decision support is provided by using a built-in analysis tool based on the international standard DLT/T 911-2004.

Automated analysis compares two curves using an algorithm that compare amplitude as well as frequency shift and lets you know if the difference is severe, obvious, or light.



Considerations When Performing SFRA Measurements

SFRA measurements are compared over time or between different test objects. This accentuates the need to perform the test with the highest repeatability and eliminates the influence from external parameters such as cables, connections and instrument performance. FRAX offers all the necessary tools to ensure that the measured curve represents the internal condition of the transformer.

Good Connections

Bad connections can compromise the test results which is why FRAX offers a rugged test clamp that ensures good connection to the bushings and solid connections to the instrument.

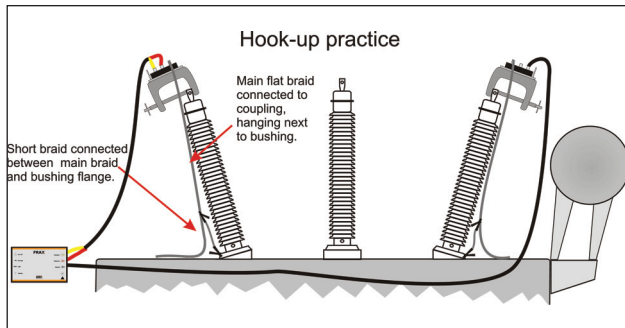


Contacts made with the C-clamp guarantee good connections

Shortest Braid Concept

The connection from the cable shield to ground has to be the same for every measurement on a given transformer. Traditional ground connections techniques have issues when it comes to providing repeatable conditions. This causes unwanted variations in the measured response for the highest frequencies that makes analysis difficult.

The FRAX braid drops down from the connection clamp next to the insulating discs to the ground connection at the base of the bushing. This creates near identical conditions every time you connect to a bushing whether it is tall or short.



The laptop can be operated by touch screen and communicates with the FRAX 99 via USB cable. Measurement ground braids connect close to the connection clamps and run next to the bushing to the flange connection to avoid cable loops that otherwise affect the measurement.

IMPORT AND EXPORT

The FRAX software can import data files from other FRA instruments making it possible to compare data obtained using another FRA unit. FRAX can import and export data according to the international XFRA standard format as well as standard CSV and TXT formats.

Optimized Sweep Setting

The software offers the user an unmatched feature that allows for fast and efficient testing. Traditional SFRA systems use a logarithmic spacing of measurement points. This results in as many test points between 20Hz and 200Hz as between 200KHz and 2MHz and a relatively long measurement time.

The frequency response from the transformer contains a few resonances in the low frequency range but a lot of resonances at higher frequencies. FRAX allows the user to specify less measurement points at lower frequencies and high measurement point density at higher frequencies. The result is a much faster sweep with greater detail where it is needed.

FTB 101

Several international FRA guides recommends to verify the integrity of cables and instrument before and after a test using a test circuit with a known FRA response supplied by the equipment manufacturer. FRAX comes with a field test box FTB101 as a standard accessory and allows the user to perform this important validation in the field at any time and secure measurement quality.



FTB 101 Field Test Box

DYNAMIC RANGE

Making accurate measurements in a wide frequency range with high dynamics puts great demands on test equipment, test leads, and test set up. FRAX 99 is designed with these requirements in mind. It is rugged, able to filter induced interference and fulfills all international standards and recommendations on dynamic range and accuracy.

FEATURES AND BENEFITS

- Smallest and most rugged FRA instrument in the industry.
- Guaranteed repeatability by using superior cabling technology, thus avoiding the introduction of error due to cable connection and positioning (which is common in other FRA manufacturers' equipment).
- Fulfills all international standards for Sweep Frequency Response Analysis (SFRA) measurements.
- Advanced analysis and support software tools allows for sound decision making with regard to further diagnostics analysis and/or transformer disposition.

SPECIFICATIONS

General

FRA Method:	Sweep frequency (SFRA)
Frequency Range:	0.1 Hz - 25 MHz, user selectable
Number of Points:	Default 1046, User selectable up to 32,000
Measurement time:	Default 64 s, fast setting, 37 s (20 Hz - 2 MHz)
Points Spacing:	Log., linear or both
Dynamic Range/	
Internal Noise:	>115dB
Accuracy:	±0.5 dB down to -100 dB (10 Hz - 10 MHz)
IF Bandwidth/Integration Time:	User selectable (<10% default)
Software:	FRAX for Windows 2000/ XP/Vista
PC Communication:	USB (galvanically isolated)
Calibration Interval:	Max 3 years
Standards/guides:	Fulfill requirements in Cigré Brochure 342, 2008 Mechanical condition assessment of transformer windings using FRA and Chinese standard DL/T 911-2004, FRA on winding deformation of power transformers, as well as other international standards and recommendations

Analog Output

Channels:	1
Compliance Voltage:	20 V peak-to-peak
Measurement Voltage at 50 Ω:	10 V peak-to-peak
Output Impedance:	50 Ω
Protection:	Short-circuit protected

Analog Input

Channels:	2
Sampling:	Simultaneously
Input Impedance:	50 Ω
Sampling Rate:	100 MS/s

Physical

Instrument Weight:	1.4 kg/3.1 lbs
Instrument and Case Weight:	2.5 kg/5.5 lbs
Dimensions with Case:	335 x 310 x 110 mm 13.2 x 12.2 x 4.3 in.
Soft Case with Accessories:	8 kg/17.6 lbs
Soft Case Dimensions:	450 x 300 x 150 mm 17.7 x 11.8 x 5.9 in.
Total Weight:	10.5 kg/23 lbs
Input Voltage:	11 - 16 V dc or 90 - 135 V ac and 170 - 264V ac, 47-63 Hz

Environmental

Operating Ambient Temp:	-20°C to +50°C / -4°F to +122°F
Operating Relative Humidity:	< 90% non-condensing
Storage Ambient Temp:	-20°C to 70°C / -4°F to +158°F
Storage Relative Humidity:	< 90% non-condensing
CE Standards:	IEC61010 (LVD) EN61326 (EMC)

PC Requirements

(PC not included)

Operating System:	Windows 2000/ XP / Vista
Processor:	Pentium 500 MHz
Memory:	256 Mb RAM or more
Hard Drive:	Minimum 30 Mb free
Interface:	USB

ORDERING INFORMATION

Item (Qty)	Cat. No.
FRAX 99 complete with: ac/dc adapter, mains cable, ground cable 5 m (16 ft), soft transport case, USB cable, Windows software, 4 x 3 m (10 ft) ground braid set, 2 x C-clamp, field test box FTB 101, generator cable 9 m (30 ft), measure cable 9 m (30 ft), manual	AC-29090
FRAX 99 complete with: ac/dc adapter, mains cable, ground cable 5 m (16 ft), soft transport case, USB cable, Windows software, 4 x 3 m (10 ft) ground braid set, 2 x C-clamp, field test box FTB 101, generator cable 18 m (60 ft), measure cable 18 m (60 ft), manual	AC-29092
Optional Accessories	
Calibration set	AC-90020
FRAX Demo Box FDB 101	AC-90050
FRAX Generator cable, 2xBNC, 9 m (30 ft)	GC-30040
FRAX Generator cable, 2xBNC, 18 m (60 ft)	GC-30042
FRAX Measure cable, 1xBNC, 9 m (30 ft)	GC-30050
FRAX Measure cable, 2xBNC, 18 m (60ft)	GC-30052
FRAX for Windows	SA-AC101

UK
Archcliffe Road, Dover
CT17 9EN England
T +44 (0) 1 304 502101
F +44 (0) 1 304 207342
UKsales@megger.com

UNITED STATES
4271 Bronze Way
Dallas, TX 75237-1019 USA
T 1 800 723 2861 (USA only)
T +1 214 333 3201
F +1 214 331 7399
USsales@megger.com

OTHER TECHNICAL SALES OFFICES
Täby SWEDEN, Norristown USA,
Sydney AUSTRALIA, Toronto CANADA,
Trappes FRANCE, Kingdom of BAHRAIN,
Mumbai INDIA, Johannesburg SOUTH
AFRICA, and Chonburi THAILAND

Registered to ISO 9001:2000 Cert. no. 10006.01
FRAX99_DS_en_V01
www.megger.com
Megger is a registered trademark
Specifications are subject to change
without notice.